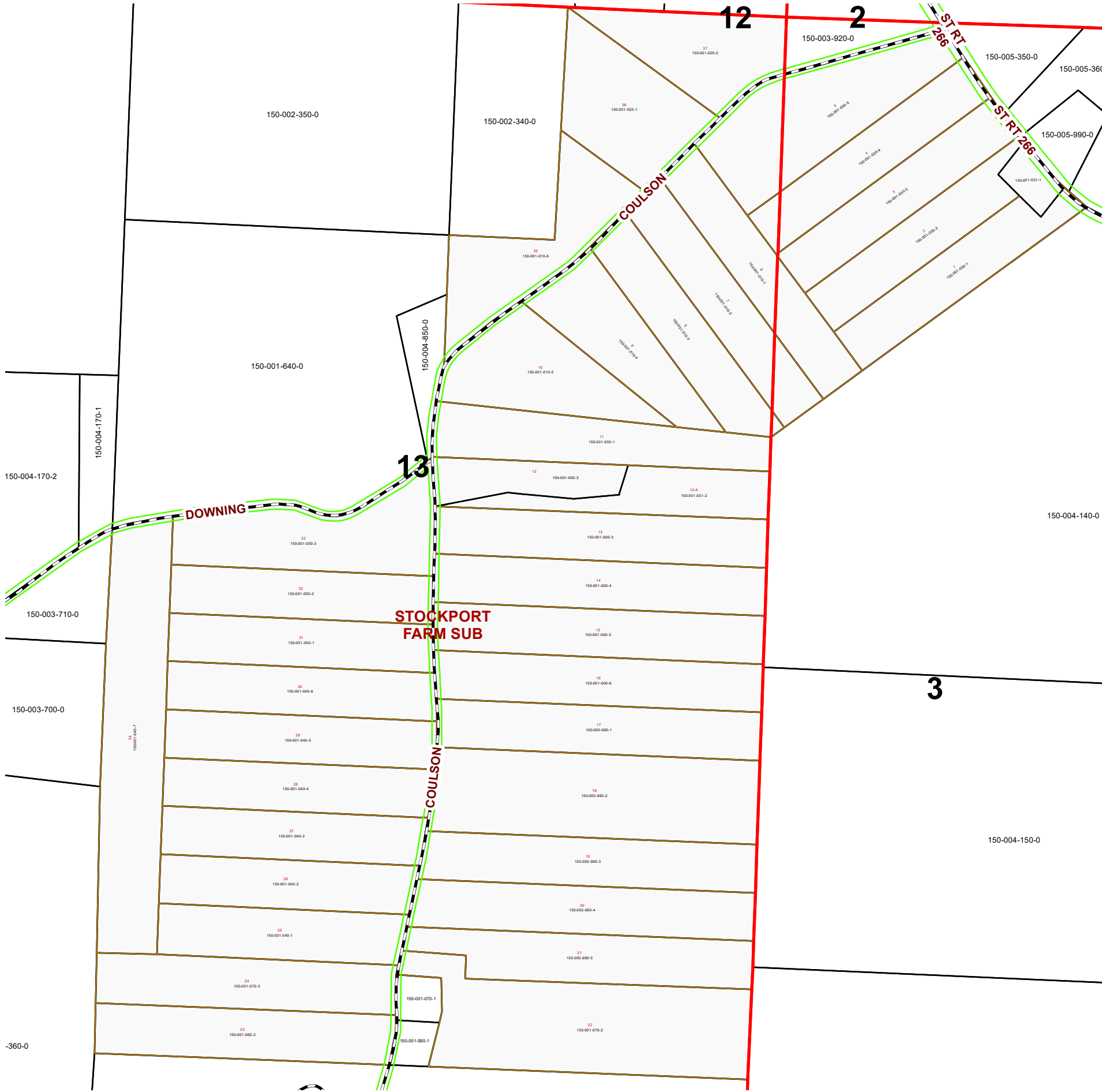
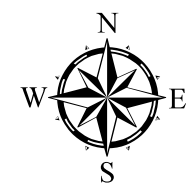


STOCKPORT FARM SUBDIVISION

PENN TOWNSHIP SECTION 13 & FRACTION 3 R 12 TWP 9 MORGAN COUNTY, OHIO

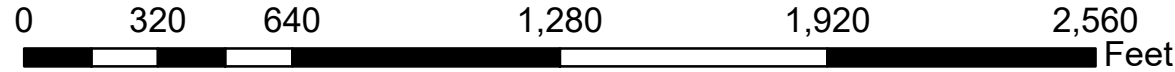


PIN	Owner	LegalDescr	Acres	VOL	PAGE	Survey_Ref
150-001-000-3	DILLE CURTIS JR & JENNIFER	STOCKPORT FARM SD	6.34	OR208	1751	Stockport Farm
150-001-001-2	DILLE CURTIS R	LOT 12A STOCKPORT F	3.64	OR223	2424	PEN-0317.pdf
150-001-060-2	DILLE CURTIS R JR & JENNIFER B	STOCKPORT FARM SD	6	OR202	664	Stockport Farm
150-001-070-3	DILLE CURTIS R JR & JENNIFER B	STOCKPORT FARM SD	6	OR202	664	Stockport Farm
150-001-040-1	DILLE CURTIS R JR & JENNIFER B	STOCKPORT FARM SD	5.01	OR202	664	Stockport Farm
150-001-040-2	DILLE CURTIS R JR & JENNIFER B	STOCKPORT FARM SD	5.01	OR202	664	Stockport Farm
150-001-050-2	DILLE CURTIS R JR & JENNIFER B	STOCKPORT FARM SD	5.029	OR210	2184	Stockport Farm
150-001-050-3	DILLE CURTIS R JR & JENNIFER B	STOCKPORT FARM SD	7.08	OR210	2184	Stockport Farm
150-001-040-7	DILLE CURTIS R JR & JENNIFER B LAN	STOCKPORT FARM SD	10.248	OR68	69	Stockport Farm
150-000-990-3	DILLE CURTIS RICHARD	STOCKPORT FARM SD	6.378	OR229	118	Stockport Farm
150-001-050-1	DILLIE CURTIS R & JENNIFER B	STOCKPORT FARM SD	5.073	OR208	2166	Stockport Farm
150-001-040-6	ECKERT YOUNG S	STOCKPORT FARM SD	5.161	OR66	303	Stockport Farm
150-001-020-2	FISHER DAVID G	STOCKPORT FARM SD	5.01	OR33	696	Stockport Farm
150-001-020-1	FISHER SAMANTHA L	STOCKPORT FARM SD	6.07	OR232	3956	Stockport Farm
150-001-000-2	GREER FRANK J	STOCKPORT FARM SD	6.395	OR214	847	Stockport Farm
150-001-000-5	HAUENSTEIN DAVID W & JOYCE	STOCKPORT FARM SD	6.312	OR233	4480	Stockport Farm
150-001-000-4	HAUENSTEIN DAVID W & JOYCE	STOCKPORT FARM SD	6.328	OR232	2378	Stockport Farm
150-000-990-1	HAUENSTEIN DAVID W JR & JOYCE	STOCKPORT FARM SD	6.178	OR207	2951	Stockport Farm
150-001-031-1	KIMMEL ROBIN W	R12 T09 S03 LOT 1A ST	1.329	OR221	3241	Stockport Farm
150-001-030-1	KIMMEL SCOTT R	STOCKPORT FARM SD	4.607	OR212	1201	Stockport Farm
150-001-030-2	KIMMEL SCOTT R	STOCKPORT FARM SD	4.2738	OR212	1201	Stockport Farm
150-001-040-3	KLEIER JEREMY L & MARIA T	STOCKPORT FARM SD	5.052	OR183	160	Stockport Farm
150-001-040-4	KLEIER JEREMY L & MARIA T	STOCKPORT FARM SD	5.154	OR183	160	Stockport Farm
150-001-040-5	KOHLER KEITH M & SHARON R	STOCKPORT FARM SD	5.203	OR209	2580	Stockport Farm
150-001-070-2	MAYLE JEFFREY A	STOCKPORT FARM SD	11.692	OR201	232	Stockport Farm
150-001-010-2	MCGREW JAMES A & SHEILA A	STOCKPORT FARM SD	5.169	OR 222	3037	Stockport Farm
150-001-010-6	MCGREW JAMES A & SHEILA A	STOCKPORT FARM SD	6.085	OR222	3037	Stockport Farm
150-000-990-5	NEFF KENNETH D & MARY L	STOCKPORT FARM SD	6.147	OR163	664	Stockport Farm
150-000-990-4	NEFF MICHAEL A & DEBORAH J	STOCKPORT FARM SD	6.536	OR158	530	Stockport Farm
150-001-010-3	POWELL MARK V & LINDA J	STOCKPORT FARM SD	5.01	OR78	295	Stockport Farm
150-001-010-4	POWELL MARK V & LINDA J	STOCKPORT FARM SD	5.01	OR78	295	Stockport Farm
150-000-990-2	RICHARDSON DANIEL L & SHARRI	STOCKPORT FARM SD	10.862	OR213	1018	Stockport Farm
150-001-010-1	SPENCER JASON G & COLLEEN M	STOCKPORT FARM SD	5.307	OR220	569	Stockport Farm
150-001-030-5	SPENCER JASON G & COLLEEN M	STOCKPORT FARM SD	8.115	OR112	649	Stockport Farm
150-001-000-6	WAGGY JESSE A & KAYLA RILEY	STOCKPORT FARM SD	6.245	OR231	2048	Stockport Farm
150-001-030-3	WALLACE LOIS A TOD-LARRY A WAL	STOCKPORT FARM SD	5.01	OR172	488	Stockport Farm
150-001-030-4	WALLACE LOIS A TOD-LARRY A WAL	STOCKPORT FARM SD	5.038	OR172	488	Stockport Farm
150-001-000-1	WATSON TIMOTHY R C/O RAVENNA S	STOCKPORT FARM SD	6	OR224	346	Stockport Farm
150-001-010-5	WATSON TIMOTHY R C/O RAVENNA S	STOCKPORT FARM SD	5.753	OR224	346	Stockport Farm



Boundaries	
	Hydro
	Section
	Roads
	Lot
	Township
	County
	Parcel
	ROW

Source: Morgan County Engineer's Office
 Author: Marcia Wolfe
 Date: 12/31/20



Disclaimer: The information that these maps contains is for reference purposes only. Please bring any erros to the attention of the Engineer's Office staff. Thank you